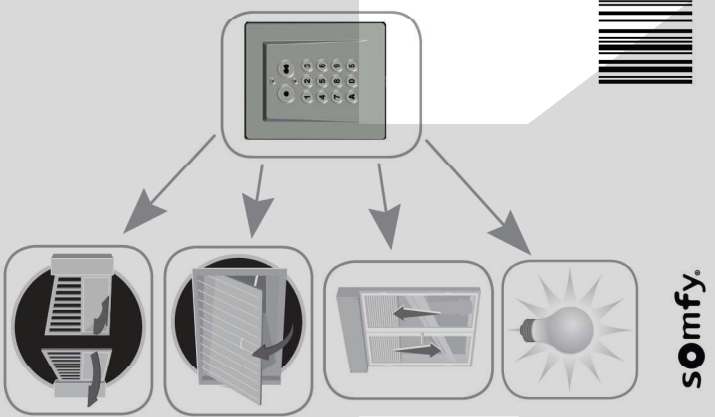


Somfy SAS dans un souci constant d'évolution et d'amélioration peut modifier le produit sans préavis. Photos non contractuelles.  
Somfy SAS in a constant concern of evolution and improvement may modify the product without prior notice. Non contractuel pictures.  
Somfy SAS, capital 20 000 000 Euros, RCS Arnhem 303 970 230 962917



27 mm  
95 mm  
115 mm

+60°C  
-20°C

IP 54  
433.42 MHz  
< 10 mW

3 Vdc  
CR 2450

## EN Operating principles

The RTS radio Keypad is a wireless, wall-mounted control with coded access. The Keypad enables 2 different motors to be operated with 2 control buttons. It is compatible with all motors, even those manufactured before 2006 (see paragraph 2.2.). User codes limit the use of the control buttons to authorised persons:

- 1 main code for the 2 control buttons,
- 2 secondary codes for each control button to give partial, brief access to the property (recording secondary codes is optional).

User codes with a choice of 4, 5 or 6 characters, can be composed using numbers 0 to 9 and the letter A.

In the event of a low level of luminosity, the Keypad buttons are fitted with backlighting. The Keypad is fitted with a 3V, CR 2450 type battery.

### Conformity

Somfy hereby declares that the radio equipment covered by these instructions is in compliance with the requirements of Radio Directive 2014/53/EU and the other essential requirements of the applicable European Directives. The full text of the EU declaration of conformity is available at [www.somfy.com/ce](http://www.somfy.com/ce).

### Safety

#### General information

Always read this installation guide and safety instructions before installing this Somfy product. Never begin installing without first checking the compatibility of this product with the associated equipment and accessories.

This guide describes how to install, commission and operate this product.

Any usage outside of applications defined by Somfy constitutes non-compliance, and is therefore not covered by the guarantee. In this event, as for all usage not consistent with the instructions given herein, Somfy accepts no responsibility for harm or damage.

Somfy cannot be held responsible for any changes in standards which come into effect after the publication of this guide.

#### General safety advice

Do not let children play with the control system.

#### Operating conditions

The product should never be installed close to metal surfaces.

Check the radio range before securing the product. The radio range is limited by the radio appliance control standards.

The use of a radio appliance (e.g. a set of Hi-Fi radio headphones) operating on the same frequency might be detrimental to the product's performance.

### Description

No.	Name	Function
1	Indicator light	upper Information on the transmission of a radio command
2		lower Information on the Keypad status (flashing = locked)
3	Control buttons	Motor control (1 button per motor)
4	Alpha-numeric buttons	Entering the code
5	Aerial	
6	S button	Access to programming mode

No.	Name	Function
7	PROG	Memorisation in a blind or roller shutter motor
8	Buttons	ADR Changing the radio (for a motor manufactured before 2006) Resetting the Keypad (restoring factory settings)
9	RESET	Commissioning the Keypad (for first use) Locking the Keypad

### 1. Commissioning (for first use) [fig.A]

1. Open the Keypad.
2. Press the RESET button.
3. Check that the Keypad has been commissioned by pressing on one of the keypad buttons. If the lower indicator light comes on, the Keypad has been commissioned. If it does not come on, press the RESET button again and check that it has been commissioned.

### 2. Memorising the Keypad

The Keypad works like a standard transmitter (for example a remote control), therefore, the guide for the motor can be used to memorise the Keypad.

#### 2.1. Recommendations

Do not touch the aerial during memorisation operations.

To memorise the Keypad in the electronics of an Axovia motor, place the Keypad on the target during the operation.

The Keypad automatically locks after 30 seconds, therefore, the control button to be memorised in the motor electronics must be pressed before the end of this time delay.

#### 2.2. Memorising the Keypad in a motor manufactured after 2006 [fig.B]

Carry out the operation described on page I or II depending on the motor in question.

After this operation, it is necessary to program the travel for the Axovia, SGS, SGA, SLD motors (begin auto learning with gate leaves in intermediate position to check they start opening).

#### 2.3. Pre-2006 Axovia and Axorn motors [fig.C]

In 2006, Somfy changed its radio protocol for gate and garage door motors.

The Keypad is compatible with radio protocols from before and after 2006. Each control button can be configured individually.

##### a) Changing the radio protocol on a control button of the Keypad

1. Enter the main code (000000 on a new or reset Keypad) and confirm with the S button.
2. Press the ADR button.
3. While the light is flashing (10 s), press the required control button. The radio protocol is changed for this control button on the Keypad.

##### b) Memorising the Keypad in a pre-2006 motor

1. Enter the main code (000000 on a new or reset Keypad) and confirm with the S button.
2. Then refer to the remote control memorising instructions in the guide for the Axovia or Axorn pre-2006 motor. For other pre-2006 motors, please consult us.

#### Tip [fig.D]

To find out the radio protocol of a button, enter the main code and press and hold the button (20 seconds).

If the upper light flashes for 10 seconds then:

- turns off => the radio protocol is post-2006.
- stays on => the radio protocol is pre-2006.

### 3. Changing the main code [fig.E]

By default, the main code is 000000 on a new Keypad.

To change the main code:

1. Enter the main code and confirm with the S button.
2. Press the S button until the lower light turns on (approximately 7 seconds). The lower light remains on.
3. Enter the chosen replacement code and confirm with the S button. The lower light will turn off then come on again.
4. Enter the code again and confirm with the S button. The lower light will turn off.

The main code is recorded.

### 4. Using the Keypad

The controls are only active if the control buttons are unlocked.

#### 4.1. Unlocking

The main code allows the 2 control buttons to be unlocked to allow control of 2 motors.

A secondary code allows one control button to be unlocked at a time.

#### 4.2. Locking

The Keypad locks automatically 30 seconds after a control button is last pressed.

#### 4.3. Using the Keypad

1. Enter the main or secondary code.
2. Press the control button of the motor to be actuated. The upper light will flash.

Successive presses of the same control button will lead to the following movements of the motor: **Open, Stop, Close, Stop, Open, etc.**

For gate or garage door motors equipped with total or partial opening function, if programmed, each control button allows operation of partial (short press < 1 second) or total (long press > 2 seconds) opening.

### 5. Mounting the Keypad [fig.F]

Before mounting the Keypad, check it operates correctly from its intended mounting location.

1. Hold the base of the Keypad against the wall and mark the drilling holes.
2. Mount the Keypad base to the wall.
3. Close the Keypad.

### 6. Secondary codes

Allocation of a secondary code to a control button makes it possible to authorise partial access to the property (for example, by allocating the secondary code to the control button for the gate of the property). Access authorisation can be temporary as the secondary code can be cleared by the owner at any time.

#### 6.1. Programming a secondary code [fig.G]

1. Enter the main code and confirm with the S button.
2. Press the S button until the lower light turns on (approximately 7 seconds). The lower light remains on.
3. Press the control button to which a secondary code must be allocated.
4. Enter a secondary code and confirm with the S button. The lower light will turn off then come on again.
5. Enter the code again and confirm with the S button. The lower light will turn off.
6. To check the validity of the secondary code:
  - wait for 30 seconds for automatic locking of the Keypad (or open the Keypad and press the RESET button),
  - unlock the Keypad with the secondary code,
  - press the control button associated with this code.
    - if the upper light flashes, the secondary code is correct,
    - if the lower light flashes, the secondary code is incorrect. Restart the programming procedure for a secondary code.

#### 6.2. Clearing a known secondary code [fig.H]

1. Enter the main code and confirm with the S button.
2. Press the S button until the lower light turns on (approximately 7 seconds).
3. Press the control button to which the secondary code is allocated.
4. Enter the secondary code to be cleared.
5. Press the S button until the lower light turns off (approximately 10 seconds).

#### 6.3. Clearing all secondary codes [fig.I]

1. Enter the main code and confirm with the S button.
2. Press the S button until the lower light turns on (approximately 7 seconds).
3. Press the S button until the lower light turns off (approximately 10 seconds).

### 4.7. Repairs

#### 7.1. No movement

The upper light stays off => worn battery: replace it. [fig. J]

The upper light flashes when a control button is pressed => change the radio protocol of the control button. [fig. C]

#### 7.2. Main code forgotten and full reset [fig. K]

The Keypad must be reset: stored settings cleared, codes and radio protocol reset to factory settings.

To reset the Keypad:

1. Open the Keypad.
2. Press the ADR button (approximately 10 seconds). The upper light will come on when the button is pressed and then the 2 lights will flash 7 times. The Keypad is reset.
3. Close the Keypad.
4. Repeat the full installation procedure: programming, changing main code, etc.

#### 7.3. Code entry errors

##### 7.3.1. Beginning of code entry incorrect

Continue by entering the correct code and confirm with the S button or press a control button. Only the last digits entered will be taken into account.

##### 7.3.2. Several incorrect code entries

The lower light flashes quickly whenever any button is pressed.

5 different incorrect codes have been entered successively. As a safety measure, the Keypad will remain locked for 5 minutes.

Wait 5 minutes.

KOVOPOLCOVARY.CZ





**B**

**Dexxo**

**B**

Oximo RTS,  
Orea RTS,  
Altus RTS,  
LT CSI RTS

**B**

**AxRoll<sup>NS</sup>**

**B**

**FreeRoll**

**C**

**D**

**E**

**F**

**G**

**H**

**I**

**J**

**K**